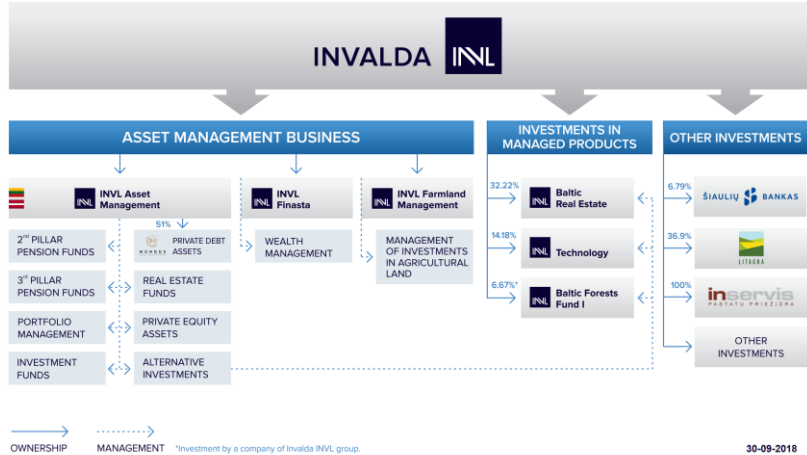


Invalda INVL, operating since 1991, is one of the leading asset management groups in the Baltic region. The companies it owns in Lithuania and Latvia manage more than 20 mutual, real estate and pension funds (2nd and 3rd pillar), alternative investments, individual portfolios, private debt assets, private equity and other financial instruments. Companies in the group manage more than EUR 650 million of assets entrusted to them by over 190 thousand clients in Lithuania and Latvia as well as international investors.

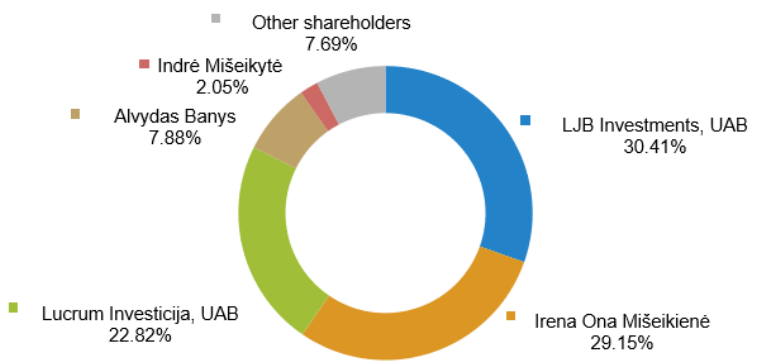
IVL1L Nasdaq Baltic Listed
The shares of Invalda INVL have traded on the Nasdaq Baltic exchange since 1995.



INVALDA INVL 2018 Q3 RESULTS' FACTSHEET

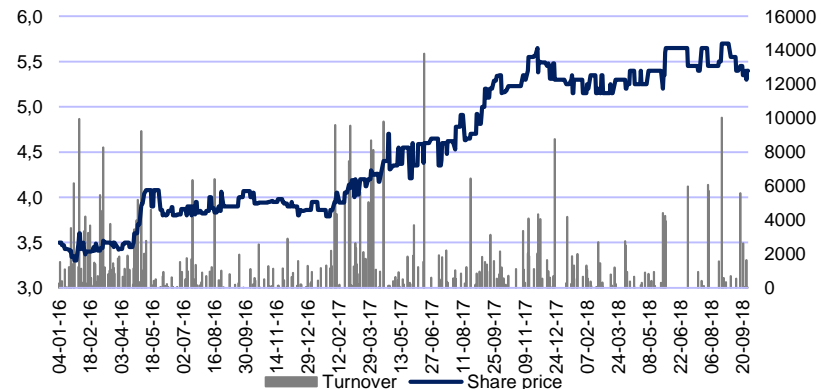
Net assets of the Company, thousand EUR	Evaluation criteria	30-09-2017	30-09-2018
Investment into asset management	Equity method	7,530	8,436
Cash and cash equivalents	Book value	810	1,568
Investments into INVL Baltic Real Estate	Market price	9,951	10,508
Investments into INVL Technology	Market price	2,639	2,589
Other listed shares	Market price	1,649	-
Investments into Litagra UAB	Comparative method of multipliers	16,810	9,898
Investments into Šiauliai Bank	Market price	17,496	18,450
Investments into Inservis UAB (including loans granted)	Comparative method of multipliers	3,793	2,592
Subsidiary cash and investment into investment fund	Fair value of net assets	-	6,449
Funds for investment into Moldova-Agroindbank	Fair value of net assets	-	4,721
Investments into other subsidiary companies (including loans granted)	Fair value of net assets	951	690
Other loans, other assets	Book value	1,182	1,121
Liabilities	Book value	(1,883)	(1,859)
Net asset value		60,928	65,163
Net asset value per share, EUR		5.27	5.64

Main items of financial statements, thousand EUR	Company's		Group's	
	9 months of 2017	9 months of 2018	9 months of 2017	9 months of 2018
Non-current assets	59,659	58,430	56,342	55,167
Current assets	3,152	8,592	7,237	13,096
Equity	60,928	65,163	60,928	65,163
Non-current liabilities	992	1,360	1,071	1,360
Current liabilities	891	499	1,580	1,740
Result before taxes	9,430	128	9,369	94
Net result	8,274	110	8,274	110



Votes as of 30-09-2018

Turnover and share price (EUR) of Invalda INVL



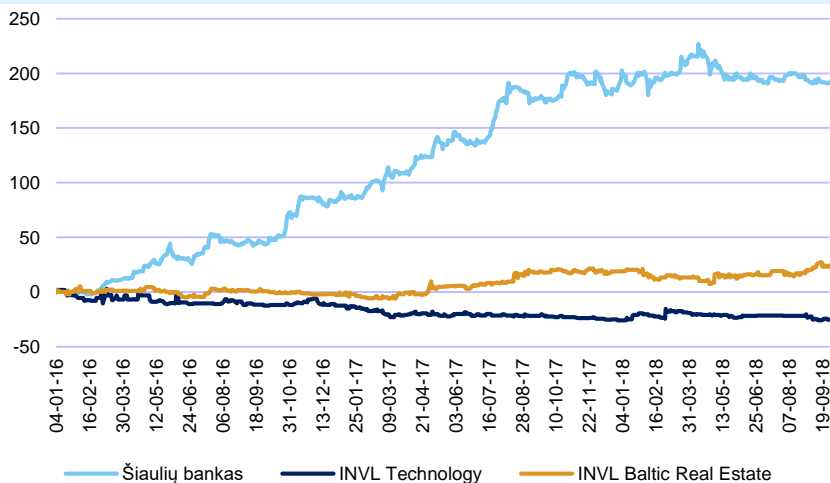
ASSET MANAGEMENT


EUR million (if not stated otherwise)	2017			30-09-2018		
	Lithuania	Latvia	total	Lithuania	Latvia	total
Number of clients, thousands	139.2	51.4	190.6	145.8	51.1	196.9
Asset under management*	533.7	77.8	611.5	610.9	76.2	687.1
<i>2nd pillar pension funds</i>	312.0	62.0	374	365.0	68.8	433.8
<i>3rd pillar pension funds</i>	21.1	1.2	22.3	23.4	1.2	24.6
<i>Investment funds</i>	87.4	-	87.4	74.5	0.0	74.5
<i>Portfolios</i>	43.7	0.2	43.9	48.9	0.0	48.9
<i>Alternative assets</i>	69.5	14.4	83.9	99.1	6.2	105.3
Revenues (January – September)	4.08	0.76	4.84	5.0	0.5	5.5
Profit before tax (EUR thousand)** (January – September)	(57)	116	59	(388)	48	(340)

More information on the services and activity of asset management sector is provided on www.invl.com.

* Eliminated investments into own products for which management fee is not charged

** According to accounting data of Invalda INVL

SHARE PRICE CHANGE (%) OF GROUP'S LISTED COMPANIES

OTHER INVESTMENTS

Company	Activity	Owned shares, %	Value of owned shares, mln EUR	Profit (loss) from investments during 9 months 2018, mln EUR
 BALTIC REAL ESTATE www.invlbalticrealestate.com	Closed-ended type investment company investing in commercial real estate	32.22	10.5	0.998
 TECHNOLOGY www.invltechnology.com	Closed-ended type investment company investing in IT businesses	14.18	2.6	0.014
 ŠIAULIŲ BANKAS www.sb.lt	Lithuanian commercial bank providing financial services to business and private clients	6.79	18.45	0.492
 LITAGRA www.litagragroup.lt	Primary agricultural production company concentrating on the cultivation of grain, as well as milk and feed production	36.9	9.9	(0.075)
 inservis <small>PASTATŲ PRIEŽIŪRA</small> www.inservis.lt	Facilities management company	100	2.6	(0.452)